



CHARTER
POTOMAC CHAPTER Nº 14
AMERICAN RIGHT OF WAY ASSOCIATION
WASHINGTON, D.C.

In accordance with Section 12, Article II of the By Laws of the American Right of Way Association, a California Corporation, Incorporated August 9, 1946, upon the application of a sufficient number of qualified persons, there is established in the District of Columbia on the 2nd day of April, 1956

POTOMAC CHAPTER Nº 14
AMERICAN RIGHT OF WAY ASSOCIATION
WASHINGTON, D.C.

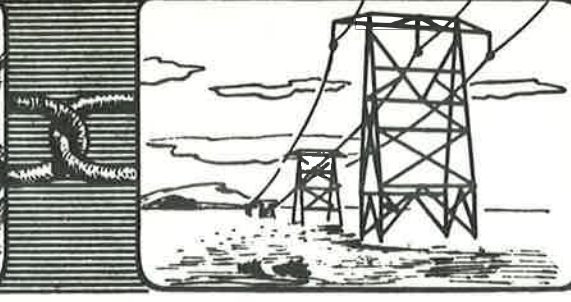
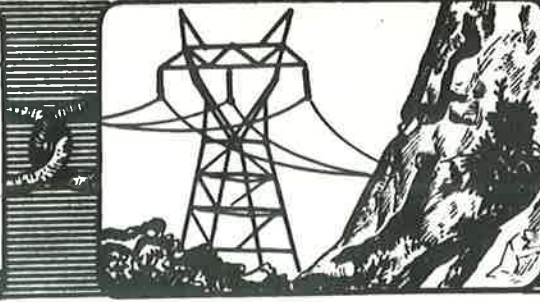
whose members, officers and by laws are as set forth in such Charter application.

Executed by authority of its Board of Directors at Los Angeles, California, this 2nd day of April, 1956.

AMERICAN RIGHT OF WAY ASSOCIATION

By _____
Frank C. Balfour, Chairman

By _____
Ford Hendricks, Secretary



Year	International Dues	Change in \$	Change in %
1935	\$ 1.50	\$ -	0.0%
1962	15.00	-	0.0%
1977	25.00	10.00	66.7%
1979	29.00	4.00	16.0%
1980	41.00	12.00	41.4%
1982	45.00	4.00	9.8%
1984	65.00	20.00	44.4%
1988	75.00	10.00	15.4%
1990	78.00	3.00	4.0%
1991	78.00	-	0.0%
1992	98.00	20.00	25.6%
1993	103.00	5.00	5.1%
1994	108.00	5.00	4.9%
1995	108.00	-	0.0%
1996	133.00	25.00	23.1%
1997	133.00	-	0.0%
1998	133.00	-	0.0%
1999	133.00	-	0.0%
2000	133.00	-	0.0%
2001	150.00	17.00	12.8%
2002	150.00	-	0.0%
2003	150.00	-	0.0%
2004	150.00	-	0.0%
2005	175.00	25.00	16.7%
2006	175.00	-	0.0%
2007	185.00	10.00	5.7%
2008	185.00	-	0.0%
2009	195.00	10.00	5.4%
2010	195.00	-	0.0%
2011	195.00	-	0.0%
2012	205.00	10.00	5.1%
2013	205.00	-	0.0%
2014	205.00	-	0.0%
2015	215.00	10.00	4.9%

YTD Member Count by Record Type

Membership Type	2007 - 8	2008 - 9	2009 - 10	2010 - 11	2011 - 12	2012 - 13	2013 - 14	2014 - 15
	Oct	Oct	Oct	Oct	Oct	Oct	Oct	Oct
Active Regular Member	6,498	6,731	6,749	6,424	6,031	6,326	6,656	6,825
Active Senior Member	1,610	1,551	1,620	1,662	1,658	1,690	1,633	1,713
Agency Members			55	157	205	270	345	474
	8,108	8,282	8,424	8,243	7,894	8,286	8,634	9,012
Honorary Member	6	7	7	6	5	4	4	3
Inactive Senior	16	16	15	15	21	21	18	13
Regular Life Member	1	2	4	4	5	4	4	4
Regular Member At Large	11	16	37	41	70	78	98	164
Retired Member w/o Magazine	149	127	132	132	141	145	148	153
Retired Member w/Magazine	319	281	292	299	293	284	282	273
Senior Life Member	6	6	8	8	11	10	8	8
Senior Member At Large	0	5	7	6	8	8	12	12
Student Member	8	5	42	50	13	9	11	9
	516	465	544	561	567	563	585	639
Total Membership - Excluding Affiliates	8,624	8,747	8,968	8,804	8,461	8,849	9,219	9,651
Affiliates						1,109	1,063	1,050
Total Membership Including Affiliates	8,624	8,747	8,968	8,804	8,461	9,958	10,282	10,701
Monthly Change From Last Year		123	221	-164	-343	1497	324	419
Monthly % of Change From Last Year		101.4%	102.5%	98.2%	96.1%	117.7%	103.3%	104.1%
Compare to Previous Month	Increase	Increase	Increase	Increase	Increase	Increase	Increase	Increase
Compare to Previous Year		Increase	Increase	Decrease	Decrease	Increase	Increase	Increase